



# VM EDGE BANDER TOOLING CATALOG



quality. service. innovation.

# Vision Machinery

## MORE THAN MACHINES

From Edge Banders, CNC Machines, and Saws--  
We offer the **TOOLS** you need for high quality machining!

Edgebander Tooling, Router Bits,  
Tool Holders & Collets, Saw Blades,  
Custom Tooling & more!


Tooling Catalogs available at  
[visionmachineryinc.com/tooling](http://visionmachineryinc.com/tooling)



## WE ARE AT YOUR SERVICE

Our Service Team consists of full-time technicians who work across Northern California and Northern Nevada specializing in CNC Machining Centers, Beamsaws, Edgebanders (we are **BIESSE Factory Certified**) & Classical Equipment. Our services include:

- Inspection, Calibration & Repair**
- Scheduled Maintenance Programs**
- Shop Layout Design & Workflow Optimization**
- Dust Collection Design & Install**
- Compressed Air Systems Design & Install**
- Plant Moves, Machine Relocations & Installs**
- Glue Pot Rebuild, Rental & Repair**

The first supplies of Wirutex tools mounted on  **BIESSE** woodworking machines came out around 30 years ago. It was only in the early years of the new century that this collaboration turned into an official partnership, with Wirutex beginning to produce tools specifically designed for Biesse machines. Wirutex currently manufactures original tools for Biesse edgbanding machines and squaring/edgbanding machines, CNC machining centres and Biesse Selco panel sizing centres.

### LIST OF ABBREVIATIONS

<b>D</b>	DIAMETER
<b>B</b>	CUTTING THICKNESS
<b>d</b>	BORE/CENTRAL BORE
<b>R</b>	RADIUS
<b>Z</b>	QUANTITY OF KNIVES/TEETH

**Wirutex Id** Wirutex product code

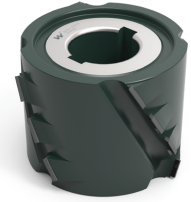
**BIESSE Id** BIESSE design code



# AKRON 1100

## RT01 PRE-MILLING UNIT

D (mm)	B (mm)	d (mm)	Z	Rot.	BIESSE ID	Wirutex ID	Price
80	55	30+2KN	2+2	CW	CCEN350035	S15317	\$895.00
80	55	30+2KN	2+2	CCW	CCEN350036	S15318	\$895.00



## IT01 END TRIMMING UNIT

D (mm)	B (mm)	d (mm)	Z	BIESSE ID	Wirutex ID	Price
100	3.2	30	20	CSEN750069	C05790	\$115.00



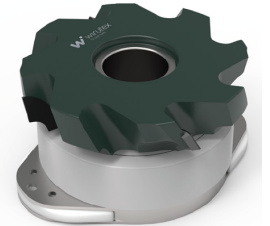
## RF01 FINE TRIMMING UNIT KNIVES

Features / Dimensions	Z	Rot.	BIESSE ID	Wirutex ID	Price
R=1	3	LH	CCEN700013	S16406PHM	\$69.00
R=2	3	LH	CSEN700007	S15166PHM	\$69.00
R=3	3	LH	CSEN700010	S16194PHM	\$69.00



## AR01 CORNER ROUNDING UNIT

Features / Dimensions	Z	Rot.	BIESSE ID	Wirutex ID	Price
R=2	4	CCW	CCEN350027	S16635	\$759.00
R=3	4	CCW	CCEN350095	S16637	\$759.00



## RB01 EDGE SCRAPER UNIT

Features / Dimensions	BIESSE ID	Wirutex ID	Price
R=1	3402A0124	D03607	\$98.00
R=2	3402A0126	D03609	\$98.00
R=3	3402A0082	D03222	\$98.00



## RC01 GLUE SCRAPER UNIT

Features / Dimensions	Z	BIESSE ID	Wirutex ID	Price
22.86 x 2.5	3	E3401E0117	C00626	\$15.00





## RT02 PRE-MILLING UNIT

D (mm)	B (mm)	d (mm)	Z	BIESSE ID	Wirutex ID	Price
80	65	30+2KN	3+3	CCEN350086	S13164	\$895.00



## IT03 END TRIMMING UNIT

D (mm)	B (mm)	d (mm)	Z	BIESSE ID	Wirutex ID	Price
150	3.6	55+4	32+4	CSEN750036	D04214	\$187.00

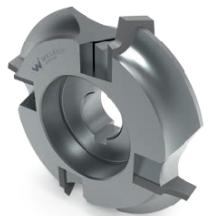
## RF02 FINE TRIMMING UNIT KNIVES

Features / Dimensions	Z	Rot.	BIESSE ID	Wirutex ID	Price
R=1	3	CW	CCEN700015	D03652	\$60.00
R=1	3	CCW	CSEN700016	D03654	\$60.00
R=1.5	3	CW	CSEN700017	D03656	\$60.00
R=1.5	3	CCW	CSEN700018	D03658	\$60.00
R=2	3	CW	CSEN700019	D03660	\$60.00
R=2	3	CCW	CSEN700020	D03662	\$60.00
R=3	3	CW	CSEN700021	D03664	\$60.00
R=3	3	CCW	CSEN700022	D03666	\$60.00



## ARO2 CORNER ROUNDING UNIT KNIVES

Features / Dimensions	Z	BIESSE ID	Wirutex ID	Price
R=1	4	3402A0087	D03257	\$39.00
R=1.5	4	3402A0086	D03254	\$39.00
R=2	4	3402A0084	D03248	\$39.00
R=3	4	3402A0085	D03251	\$39.00



## RB02 EDGE SCRAPER UNIT

Features / Dimensions	BIESSE ID	Wirutex ID	Price
R=1	3402A0083	D03607	\$98.00
R=1.5	3402A0124	D03608	\$98.00
R=2	3402A0126	D03609	\$98.00
R=3	3402A0082	D03222	\$98.00



## RB02 GLUE SCRAPER UNIT

Features / Dimensions	Z	BIESSE ID	Wirutex ID	Price
22.86 x 2.5	3	E3401E0117	C00626	\$15.00



# JADE 2000



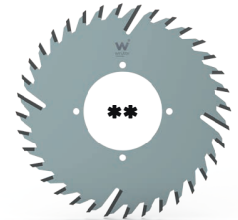
## RT02 PRE-MILLING UNIT

D (mm)	B (mm)	d (mm)	Z	BIESSE ID	Wirutex ID	Price
80	65	30+2KN	3+3	CCEN350086	S13164	\$895.00



## IT03 END TRIMMING UNIT \*Pre-2017 \*\*Post-2017

D (mm)	B (mm)	d (mm)	Z	BIESSE ID	Wirutex ID	Price
150	3.6	30+3	32+4	3401A0335	D03150	\$187.00
150	3.6	55+4	32+4	CSEN750036	D04214	\$187.00

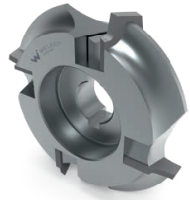


## RF02 FINE TRIMMING UNIT KNIVES

Features / Dimensions	Z	Rot.	BIESSE ID	Wirutex ID	Price
R = 1/1.5/25°	4	CW	CCEN700023	D03668	\$63.00
R = 1/1.5/25°	4	CCW	CSEN700024	D03670	\$63.00
R = 1/2/25°	4	CW	CSEN700025	D03672	\$63.00
R = 1/2/25°	4	CCW	CSEN700026	D03674	\$63.00
R = 1.5/2/25°	4	CW	CSEN700027	D03676	\$63.00
R = 1.5/2/25°	4	CCW	CSEN700028	D03678	\$63.00
R = 1.5/3/25°	4	CW	CSEN700029	D03680	\$63.00
R = 1.5/3/25°	4	CCW	CSEN700030	D03682	\$63.00
R = 2/3/25°	4	CW	CSEN700031	D03684	\$63.00
R = 2/3/25°	4	CCW	CSEN700032	D03686	\$63.00



**Continued on the Next Page**



## AR02 CORNER ROUNDING UNIT KNIVES

Features / Dimensions	Z	BIESSE ID	Wirutex ID	Price
R = 1	4	3402A0087	D03257	\$39.00
R = 1.5	4	3402A0086	D03254	\$39.00
R = 2	4	3402A0084	D03248	\$39.00
R = 3	4	3402A0085	D03251	\$39.00



## RB02 EDGE SCRAPER UNIT



Features / Dimensions	BIESSE ID	Wirutex ID	Price
R=1	3402A0124	D03607	\$98.00
R=1.5	3402A0125	D03608	\$98.00
R=2	3402A0126	D03609	\$98.00
R=3	3402A0082	D03222	\$98.00



## RB02 GLUE SCRAPER UNIT

Features / Dimensions	Z	BIESSE ID	Wirutex ID	Price
22.86 x 2.5	3	E3401E0117	C00626	\$15.00

continued

# AKRON 1300



## WANT TO SEE THESE MACHINES IN ACTION?

- CHECK OUT OUR VIDEO PAGES
- VISIT OUR SHOWROOM
- REQUEST A VIRTUAL DEMONSTRATION



# AKRON 1400

## RT02 PRE-MILLING UNIT

D (mm)	B (mm)	d (mm)	Z	BIESSE ID
80	65	30+2KN	3+3	CCEN350086

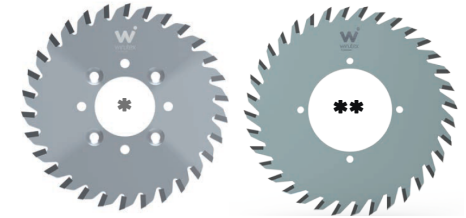
Wirutex ID	Price
S13164	\$895.00



## IN-801 END TRIMMING UNIT \*Pre-2017 \*\*Post-2017

D (mm)	B (mm)	d (mm)	Z	BIESSE ID
140	3.6	30+3+3	36	N3401N0503
140	3.6	55+4	36	CSEN750035

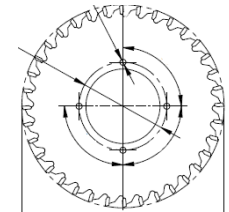
Wirutex ID	Price
D02543	\$119.00
D04050	\$119.00



## IN-70 END TRIMMING UNIT

D (mm)	B (mm)	d (mm)	Z	Rot.	BIESSE ID
150	3.2	55+4	36	LH	CCEN750046
150	3.2	55+4	36	RH	CSEN750047

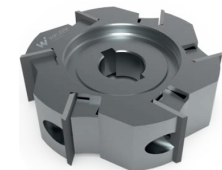
Wirutex ID	Price
C11IT01LI170	\$144.00
C11IT01LI160	\$144.00



## RS-502 TOP AND BOTTOM TRIMMING UNIT KNIVES

D (mm)	B (mm)	d (mm)	Z	BIESSE ID
70	20	16+2KN	6	N3402N0040

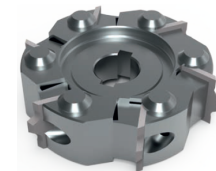
Wirutex ID	Price
C00403	\$6.00



## RI-501 FINE TRIMMING UNIT KNIVES

Features / Dimensions	Z	BIESSE ID
R = 2	6	N3402N0125
R = 3	6	N3402N0126

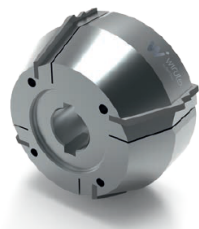
Wirutex ID	Price
D02374	\$48.00
D02134	\$48.00



**Continued on the Next Page**



# RF02/RI-501 MULTIPROFILE FINE TRIMMING UNIT KNIVES



Features / Dimensions	Z	Rot.	BIESSE ID	Wirutex ID	Price
R = 1/2/25°	4	CW	CSEN7000025	D03672	\$63.00
R = 1/2/25°	4	CCW	CSEN7000026	D03674	\$63.00
R = 1.5/2/25°	4	CW	CSEN7000027	D03676	\$63.00
R = 1.5/2/25°	4	CCW	CSEN7000028	D03678	\$63.00
R = 1.5/3/25°	4	CW	CSEN7000029	D03680	\$63.00
R = 1.5/3/25°	4	CCW	CSEN7000030	D03682	\$63.00
R = 2/3/25°	4	CW	CSEN7000031	D03684	\$63.00
R = 2/3/25°	4	CCW	CSEN7000032	D03686	\$63.00

# AR02-E CORNER ROUNDING UNIT KNIVES



Features / Dimensions	Z	BIESSE ID	Wirutex ID	Price
R = 1	4	3402A0087	D03257	\$39.00
R = 1.5	4	3402A0086	D03254	\$39.00
R = 2	4	3402A0084	D03248	\$39.00
R=3	4	3402A0085	D03251	\$39.00

# RB02 EDGE SCRAPER UNIT



Features / Dimensions	BIESSE ID	Wirutex ID	Price
R=1	3402A0124	D03607	\$98.00
R=1.5	3402A0125	D03608	\$98.00
R=2	3402A0126	D03609	\$98.00
R=3	3402A0082	D03222	\$98.00

# RC02 GLUE SCRAPER UNIT



Features / Dimensions	Z	BIESSE ID	Wirutex ID	Price
22.86 x 2.5	3	E3401E0117	C00626	\$15.00

continued

# AKRON 14+00

# AKRON 400



## FI-502 PRE-MILLING UNIT

D (mm)	B (mm)	d (mm)	Z	BIESSE ID
80	65	30+2KN	3+3	CCEN350086

Wirutex ID	Price
S13164	\$895.00



## IN-801 END TRIMMING UNIT

D (mm)	B (mm)	d (mm)	Z	BIESSE ID
140	3.6	30+3+3	36	N3401N0503

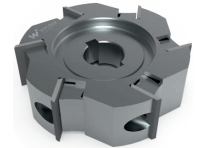
Wirutex ID	Price
D02543	\$119.00



## RS-502 TOP AND BOTTOM TRIMMING UNIT KNIVES

D (mm)	B (mm)	d (mm)	Z	BIESSE ID
70	20	16+2KN	6	N3402N0040

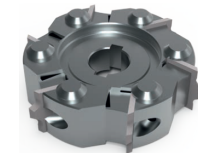
Wirutex ID	Price
C00403	\$6.00



## RI-501 FINE TRIMMING UNIT KNIVES

Features / Dimensions	Z	BIESSE ID
R = 2	6	CSEN700025
R = 3	6	CSEN700026

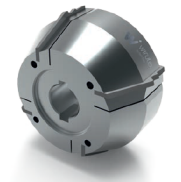
Wirutex ID	Price
D03672	\$63.00
D03674	\$63.00



## RI-501 FINE TRIMMING UNIT KNIVES

Features / Dimensions	Z	Rot.	BIESSE ID
R = 1/2/25°	4	CW	CSEN700025
R = 1/2/25°	4	CCW	CSEN700026
R = 1.5/2/25°	4	CW	CSEN700027
R = 1.5/2/25°	4	CCW	CSEN700028
R = 1.5/3/25°	4	CW	CSEN700029
R = 1.5/3/25°	4	CCW	CSEN700030
R = 2/3/25°	4	CW	CSEN700031
R = 2/3/25°	4	CCW	CSEN700032

Wirutex ID	Price
D03672	\$63.00
D03674	\$63.00
D03676	\$63.00
D03678	\$63.00
D03680	\$63.00
D03682	\$63.00
D03684	\$63.00
D03686	\$63.00

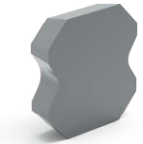


**Continued on the Next Page**



## CR-200V CORNER ROUNDING UNIT KNIVES

Features / Dimensions	Z	BIESSE ID	Wirutex ID	Price
R=1	4	3402A0087	D03257	\$39.00
R=1.5	4	3402A0086	D03254	\$39.00
R=2	4	3402A0084	D03248	\$39.00
R=3	4	3402A0085	D03251	\$39.00



## RBK-503 EDGE SCRAPER UNIT

Features / Dimensions	BIESSE ID	Wirutex ID	Price
R=1	N3402N00056	D02329	\$88.00
R=1.5	N3402N00055	D01536	\$88.00
R=2	N3402N00054	D01535	\$88.00
R=3	N3402N00053	D01553	\$88.00



## RCC-701 GLUE SCRAPER UNIT

Features / Dimensions	Z	BIESSE ID	Wirutex ID	Price
22.86 x 2.5	3	E3401E0117	C00626	\$15.00



**AKRON 420**  
 continued

# AKRON 800, ROXYL, STREAM A



## FI-502 PRE-MILLING UNIT

D (mm)	B (mm)	d (mm)	Z	BIESSE ID	Wirutex ID	Price
80	65	30+2KN	3+3	CCEN350086	S13164	\$895.00

## IN-801 END TRIMMING UNIT \*Pre-2017 \*\*Post-2017

D (mm)	B (mm)	d (mm)	Z	BIESSE ID	Wirutex ID	Price
140	3.6	30+3+3	36	N3401N0503	D02543	\$119.00
140	3.6	55+4	36	CSEN750035	D04050	\$119.00

## IT90-S END TRIMMING UNIT

D (mm)	B (mm)	d (mm)	Z	BIESSE ID	Wirutex ID	Price
130	3.6	30+4	16+4	N3401N0301	C03005	\$119.00

## RS-701/RS-100 TOP AND BOTTOM TRIMMING UNIT KNIVES

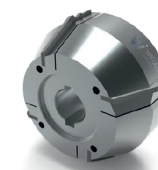
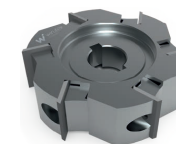
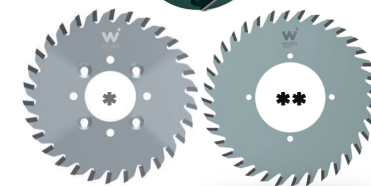
D (mm)	B (mm)	d (mm)	Z	BIESSE ID	Wirutex ID	Price
80	25	16+2KN	6	N3402N0127	D02135	\$12.00

## RF300 / RF400 FINE TRIMMING UNIT KNIVES

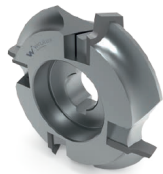
Features / Dimensions	Z	Rot.	BIESSE ID	Wirutex ID	Price
R= 1.5/2/3	4	CW	N3402N0035	D01540	\$79.00
R=1.5/2/3	4	CCW	N3402N0036	D01541	\$79.00
R=1/2/3	4	CW	N3402N0085	D01700	\$79.00
R=1/2/3	4	CCW	N3402N0084	D01701	\$79.00
R=1/1.5/2	4	CW	N3402N0085	D01999	\$79.00
R=1/1.5/2	4	CCW	N3402N0082	D01998	\$79.00

## RF300 / RF400 FINE TRIMMING UNIT KNIVES

Features / Dimensions	Z	Rot.	BIESSE ID	Wirutex ID	Price
R= 1/1.5	4	CW	N3402N0159	D02844	\$63.00
R=1/1.5	4	CCW	N3402N0160	D02846	\$63.00
R=1/2	4	CW	N3402N0161	D02848	\$63.00
R=1/2	4	CCW	N3402N0162	D02850	\$63.00
R=1.5/2	4	CW	N3402N0163	D02852	\$63.00
R=1.5/2	4	CCW	N3402N0164	D02854	\$63.00
R=1.5/3	4	CW	N3402N0165	D02856	\$63.00
R=1.5/3	4	CCW	N3402N0166	D02858	\$63.00
R=2/3	4	CW	N3402N0167	D02860	\$63.00
R=2/3	4	CCW	N3402N0168	D02862	\$63.00



**Continued on  
the Next Page**



## AR30/AR34 CORNER ROUNDING UNIT KNIVES

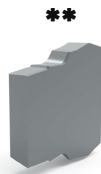
Features / Dimensions	Z	BIESSE ID	Wirutex ID	Price
R=1	4	3402A0087	D03257	\$39.00
R=1.5	4	3402A0086	D03254	\$39.00
R=2	4	3402A0084	D03248	\$39.00
R=3	4	3402A0085	D03251	\$39.00

## RBK-503 EDGE SCRAPER UNIT \*Pre JUNE 2017



Features / Dimensions	BIESSE ID	Wirutex ID	Price
R=1	N3402N0056	D02329	\$88.00
R=1.5	N3402N0055	D01536	\$88.00
R=2	N3402N0054	D01535	\$88.00
R=3	N3402N0053	D01553	\$88.00

## RB02 EDGE SCRAPER UNIT \*\*Post JUNE 2017



Features / Dimensions	BIESSE ID	Wirutex ID	Price
R=1	3402A0124	D03607	\$98.00
R=1.5	3402A0125	D03608	\$98.00
R=2	3402A0126	D03609	\$98.00
R=3	3402A0082	D03222	\$98.00

## RB300/RB400 EDGE SCRAPER UNIT



Features / Dimensions	BIESSE ID	Wirutex ID	Price
R=1/1.5/2	CSEN750001	D03711	\$115.00
R=1.5/2/3	CSEN750002	D03712	\$115.00
R=1/2/3	CSEN750003	D03713	\$115.00

## RCC-701 GLUE SCRAPER UNIT



Features / Dimensions	Z	BIESSE ID	Wirutex ID	Price
22.86 x 2.5	3	E3401E0117	C00626	\$15.00



AKRON 800, ROXYL,  
STREAMMA  
continued

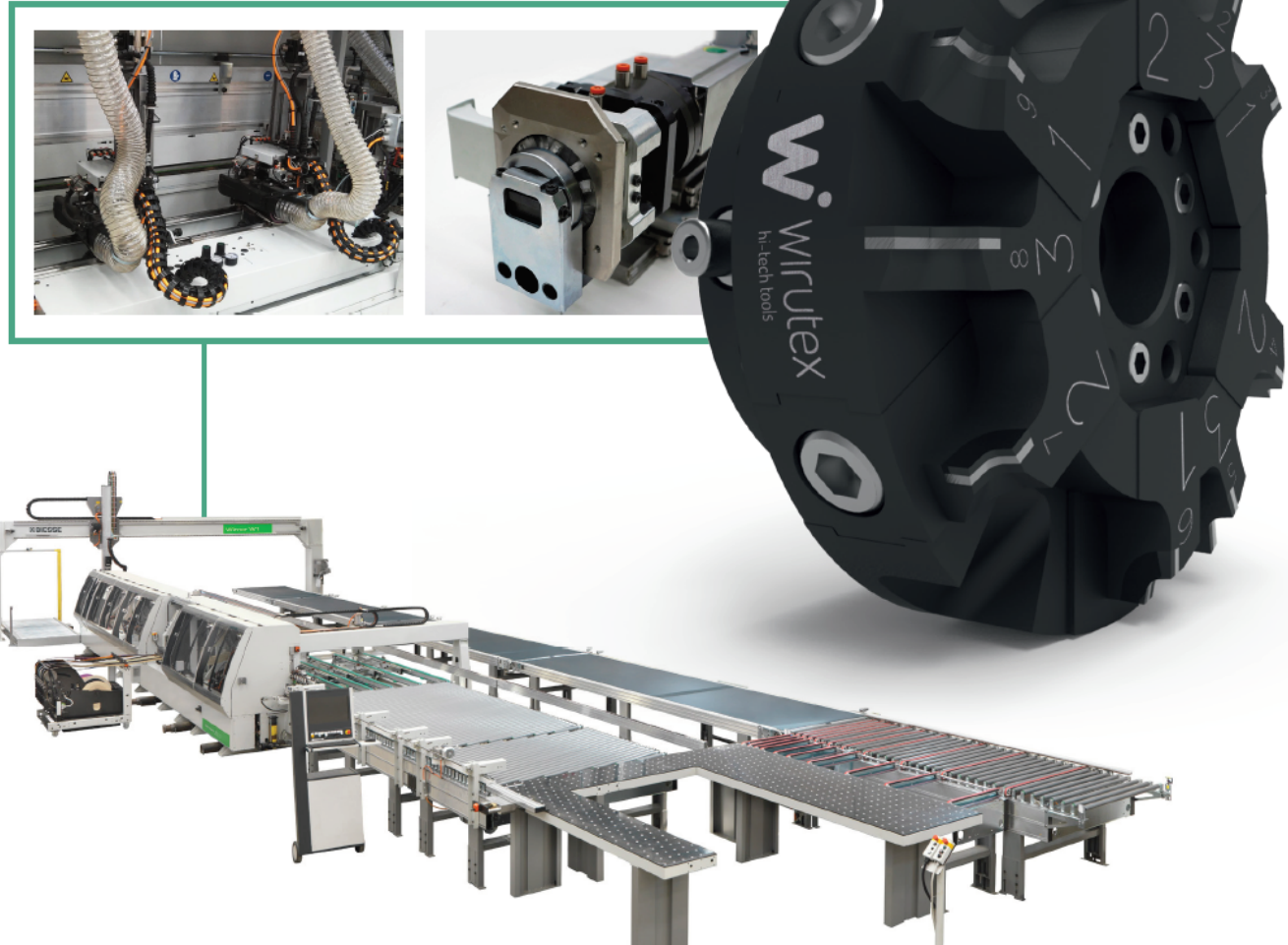
# STREAM B

**STREAM B TOOLING  
AVAILABLE BY  
REQUEST.**

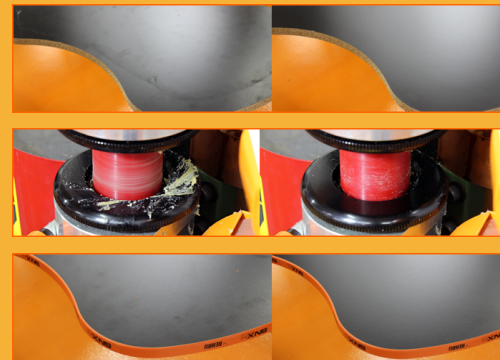
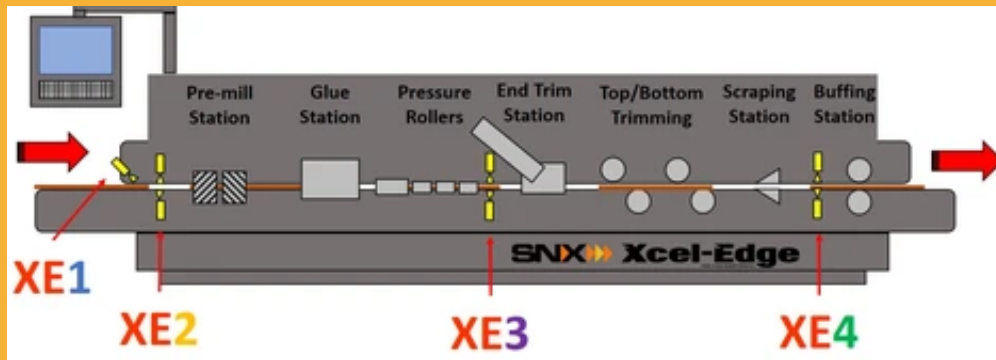
The highly advanced  
Q-System is available  
for purchase at  
Vision Machinery.

**Q-System®** is an on demand flexible multi-radius system created by the collaboration between **Wirutex** and **BIESSE**.  
Designed specifically for the rounding multifunction unit of the whole range of **BIESSE** Stream edgeworking machines.

Q-System® patented by Biesse.



# SNX Xcel-Edge



Minnesota-made chemicals specifically designed for straight line edge banders and hand cleaning panels.



Available in these sizes!



**HEAVY-DUTY TRIMMING PUCK**

For pricing and availability, please contact us.

916-550-1681

[tooling@visionmachineryinc.com](mailto:tooling@visionmachineryinc.com)

and more

# CHEMICAL SPRAYS

# CONTACT US



quality. service. innovation.

## Vision Machinery

### Machinery Solutions for

Wood | Stone | Glass | Plastics | Aluminum | Composite / Advanced Materials

1309 N. Market Boulevard, #140 Sacramento, CA 95834

## TOOLING

For availability of tooling, to request quotations, and to purchase, please contact:

[tooling@visionmachineryinc.com](mailto:tooling@visionmachineryinc.com)

Office (916) 550-1681

[visionmachineryinc.com/tooling](http://visionmachineryinc.com/tooling)

## SERVICE

For service requests, scheduling, ducting and parts, please contact:

[service@visionmachineryinc.com](mailto:service@visionmachineryinc.com)

Office (916) 550-1681

## SALES

For any machine inquiries, quotations, custom tooling, and to purchase, please contact:

**Lonnie Campbell**

[lonnie@visionmachineryinc.com](mailto:lonnie@visionmachineryinc.com)

Cell (916) 717-8939

## ADMIN

For invoicing and payments, please contact:

**Monique Campbell**

[admin@visionmachineryinc.com](mailto:admin@visionmachineryinc.com)

Office (916) 550-1681

*Check out our website for our tooling catalogs, machine videos, events, to chat and more!*

[www.visionmachineryinc.com](http://www.visionmachineryinc.com)